

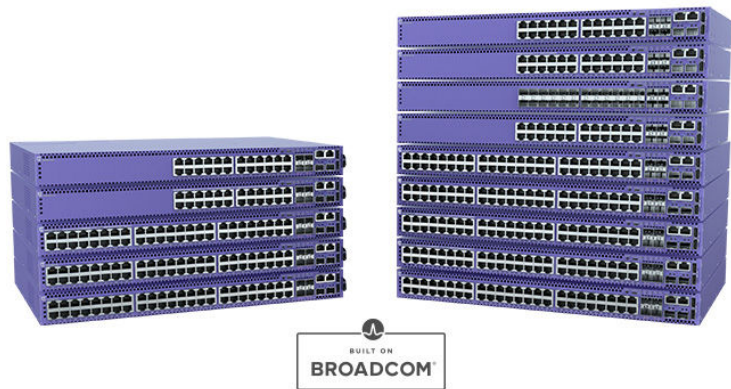
5420 Series

Highlights

- Intuitive and centralized cloud-managed switching with ExtremeCloud™ IQ and ExtremeCloud IQ – Site Engine
- Fabric-enabled operations with Extreme Fabric Connect for simplified and secure network provisioning and automation
- Choice of operating system (OS) with universal dual-persona hardware

Key Hardware Features

- Fixed 24 and 48-port models with gigabit and multi-gigabit support
- 30W, 60W, and 90W PoE (Power over Ethernet) support for powering connected devices
- 4 x 1/10Gb SFP+ or 4 x 1/10/25Gb built-in uplink ports
- 80Gb per unit stacking of up to eight switches
- Secure link encryption with MACsec across both access and uplink ports
- Non-blocking wire speed design



Universal Edge Switch Platform

The 5420 Series is a family of high-performance, feature-rich, stackable edge switches designed for the next-generation digital enterprise. Available in 24 and 48-port models, the 5420 features both gigabit and multi-gigabit (1/2.5G) versions with up to 90W PoE enabling it to be deployed across a range of edge and wiring-closet environments. As a universal hardware platform, the 5420 also offers a user-selectable choice of Extreme's flagship switch operating systems for a uniquely flexible platform.

The 5420 Series consists of 5420M and 5420F families to address a variety of end-user needs and price points. 5420M models offer field-replaceable power supplies and fans as well as four 1/10/25Gb built-in uplink ports, while 5420F models offer fixed power supply (with support for a second field-replaceable power supply), fixed fans, and four 1/10Gb built-in uplink ports. All models provide 30/60/90W PoE capabilities making them an ideal wired back end for wireless APs or in support of Next Gen powered Ethernet devices, such as digital signage, pan-tilt-zoom cameras, smart lighting, or point-of-sale terminals.

Universal Hardware Platform

The 5420 comes with a dual-persona capability, allowing you to choose your OS. Either the Switch Engine (EXOS)¹ or Fabric Engine (VOSS)² OS can be selected at switch start-up or changed at a later stage. When selected, the switch assumes the features and capabilities of that OS.

5420 OS selection can also be automated with ExtremeCloud IQ so that the desired OS can be automatically loaded at switch start-up, facilitating remote OS enablement.

¹ Switch Engine is the new name for ExtremeXOS (EXOS) on all universal switch platforms, starting with Version 31.6.

² Fabric Engine is the new name for the VSP Operating System Software (VOSS) on all universal switch platforms, starting with Version 8.6.

Ethernet Fabric Services

The 5420 supports a variety of Ethernet Fabric services, including Extreme's Fabric Connect when running Fabric Engine and Extreme's IP Fabric when running Switch Engine. It also supports Fabric Attach for automated connection to either Layer 2 or Layer 3 Fabric services.

Extreme's Fabric Connect and IP Fabric enable the creation of virtualized networks that automate network operations, simplify network provisioning, and enhance security, all while reducing the strain on network and IT personnel.

Power over Ethernet (PoE)

All 5420 models support 30W, 60W, and 90W PoE that conforms with IEEE 802.3bt. This enables the 5420 to address the needs of powered edge devices, while eliminating the need for additional electrical cabling and circuits. In addition, 5420 PoE models support perpetual and fast PoE for even more efficient and reliable powered edge device operation

MACsec Link Encryption

IEEE 802.1AE MACsec* is supported on 5420 access and built-in uplink ports, enabling the encryption and decryption of packets between connected switches or devices. As a link-only encryption, 5420 switches can still apply services to the packet, such as policy or QoS, without compromising the security of packets across the link. With 128-bit and 256-bit Advanced Encryption Standard (AES) support, the 5420 provides the most secure link encryption.

* Supported on specific hardware revisions; please refer to the 5420 Hardware Installation Guide for details.

High-Performance Stacking

The 5420 Series supports high-speed stacking when running Switch Engine via its two built-in SFP-DD stacking ports. Up to eight switches can be stacked using qualified SFP+/SFP-DD direct attach cables and optical transceivers. Stacking is not supported when running Fabric Engine.

Audio Video Bridging

The 5420 Series supports IEEE 802.1 Audio Video Bridging (AVB) when running Switch Engine OS. This allows 5420 models to deliver reliable, real-time audio/ video transmission over Ethernet, meeting the quality of service required for today's high-definition, time-sensitive multimedia streams.

Cloud-Based Network Management

The 5420 can be managed by ExtremeCloud IQ and ExtremeCloud IQ Site Engine for centralized switch management, giving you a consolidated view of users, devices, and applications across wired and wireless networks for efficient inventory and network topology management. ExtremeCloud IQ enables zero touch provisioning, allowing you to quickly bring new 5420 switches online as well as select the OS persona.

Alternatively, 5420 on-box management can be done manually via a web-based GUI or generic command-line interface (CLI).

External Interfaces

Switch Model	Interfaces
5420F-24T-4XE	24 x 10/100/1000BASE-T ports <ul style="list-style-type: none"> · Full / Half-Duplex(autosensing) · MACsec-capable 4 x 1/10Gb SFP+ uplink ports(unpopulated) <ul style="list-style-type: none"> · MACsec-capable 2 x Stacking/SFP-DD ports* (unpopulated) 1 x Serial console port (RJ-45) 1 x 10/100/1000BASE-T out-of-band management port 2 x USB A ports for management or external USB flash 1 x USB Micro-B console port
5420F-24P-4XE	24 x 10/100/1000BASE-T 802.3at (30W) ports <ul style="list-style-type: none"> · Full / Half-Duplex(autosensing) · MACsec-capable 4 x 1/10Gb SFP+ uplink ports(unpopulated) <ul style="list-style-type: none"> · MACsec-capable 2 x Stacking/SFP-DD ports* (unpopulated) 1 x Serial console port (RJ-45) 1 x 10/100/1000BASE-T out-of-band management port 2 x USB A ports for management or external USB flash 1 x USB Micro-B console port
5420F-24S-4XE	24 x 100/1000BASE-X (SFP) ports (unpopulated) <ul style="list-style-type: none"> · MACsec-capable 4 x 1/10Gb SFP+ uplink ports(unpopulated) <ul style="list-style-type: none"> · MACsec-capable 2 x Stacking/SFP-DD ports* (unpopulated) 1 x Serial console port (RJ-45) 1 x 10/100/1000BASE-T out-of-band management port 2 x USB A ports for management or external USB flash 1 x USB Micro-B console port
5420F-48T-4XE	48 x 10/100/1000BASE-T ports <ul style="list-style-type: none"> · Full / Half-Duplex(autosensing) · MACsec-capable 4 x 1/10Gb SFP+ uplink ports(unpopulated) <ul style="list-style-type: none"> · MACsec-capable 2 x Stacking/SFP-DD ports* (unpopulated) 1 x Serial console port (RJ-45) 1 x 10/100/1000BASE-T out-of-band management port 2 x USB A ports for management or external USB flash 1 x USB Micro-B console port

Switch Model	Interfaces
5420F-48P-4XE	48 x 10/100/1000BASE-T 802.3at (30W) ports <ul style="list-style-type: none"> • Full / Half-Duplex(autosensing) • MACsec-capable 4 x 1/10Gb SFP+ uplink ports(unpopulated) <ul style="list-style-type: none"> • MACsec-capable 2 x Stacking/SFP-DD ports* (unpopulated) 1 x Serial console port (RJ-45) 1 x 10/100/1000BASE-T out-of-band management port 2 x USB A ports for management or external USB flash 1 x USB Micro-B console port
5420F-48P-4XL	48 x 10/100/1000BASE-T 802.3at (30W) ports <ul style="list-style-type: none"> • Full / Half-Duplex(autosensing) • MACsec-capable 4 x 1/10Gb SFP+ uplink ports(unpopulated) <ul style="list-style-type: none"> • MACsec-capable • LRM-capable 2 x Stacking/SFP-DD ports* (unpopulated) 1 x Serial console port (RJ-45) 1 x 10/100/1000BASE-T out-of-band management port 2 x USB A ports for management or external USB flash 1 x USB Micro-B console port
5420F-8W-16P-4XE	8 x 10/100/1000BASE-T 802.3bt (90W) ports <ul style="list-style-type: none"> • Full / Half-Duplex(autosensing) • MACsec-capable 16 x 10/100/1000BASE-T 802.3at (30W) ports <ul style="list-style-type: none"> • Full/Half-Duplex(autosensing) • MACsec-capable 4 x 1/10Gb SFP+ uplink ports (unpopulated) <ul style="list-style-type: none"> • MACsec-capable 2 x Stacking/SFP-DD ports* (unpopulated) 1 x Serial console port (RJ-45) 1 x 10/100/1000BASE-T out-of-band management port 2 x USB A ports for management or external USB flash 1 x USB Micro-B console port
5420F-16W-32P-4XE	16 x 10/100/1000BASE-T 802.3bt (90W) ports <ul style="list-style-type: none"> • Full / Half-Duplex(autosensing) • MACsec-capable 32 x 10/100/1000BASE-T 802.3at (30W) ports <ul style="list-style-type: none"> • Full / Half-Duplex(autosensing) • MACsec-capable 4 x 1/10Gb SFP+ uplink ports(unpopulated) <ul style="list-style-type: none"> • MACsec-capable 2 x Stacking/SFP-DD ports* (unpopulated) 1 x Serial console port (RJ-45) 1 x 10/100/1000BASE-T out-of-band management port 2 x USB A ports for management or external USB flash 1 x USB Micro-B console port

Switch Model	Interfaces
5420F-16MW-32P-4XE	16 x 100M/1G/2.5GBASE-T 802.3bt (90W) ports <ul style="list-style-type: none"> • MACsec-capable 32 x 10/100/1000BASE-T 802.3at (30W) ports <ul style="list-style-type: none"> • Full / Half-Duplex(autosensing) • MACsec-capable 4 x 1/10Gb SFP+ uplink ports(unpopulated) <ul style="list-style-type: none"> • MACsec-capable 2 x Stacking/SFP-DD ports* (unpopulated) 1 x Serial console port (RJ-45) 1 x 10/100/1000BASE-T out-of-band management port 2 x USB A ports for management or external USB flash 1 x USB Micro-B console port
5420M-24T-4YE	24 x 10/100/1000BASE-T ports <ul style="list-style-type: none"> • Full / Half-Duplex(autosensing) • MACsec-capable 4 x 1/10/25Gb SFP28 uplink ports (unpopulated) <ul style="list-style-type: none"> • MACsec-capable 2 x Stacking/SFP-DD ports* (unpopulated) 1 x Serial console port (RJ-45) 1 x 10/100/1000BASE-T out-of-band management port 2 x USB A ports for management or external USB flash 1 x USB Micro-B console port
5420M-24W-4YE	24 x 10/100/1000BASE-T 802.3bt (90W) ports <ul style="list-style-type: none"> • Full / Half-Duplex(autosensing) • MACsec-capable 4 x 1/10/25Gb SFP28 uplink ports (unpopulated) <ul style="list-style-type: none"> • MACsec-capable 2 x Stacking/SFP-DD ports* (unpopulated) 1 x Serial console port (RJ-45) 1 x 10/100/1000BASE-T out-of-band management port 2 x USB A ports for management or external USB flash 1 x USB Micro-B console port
5420M-48T-4YE	48 x 10/100/1000BASE-T ports <ul style="list-style-type: none"> • Full / Half-Duplex(autosensing) • MACsec-capable 4 x 1/10/25Gb SFP28 uplink ports (unpopulated) <ul style="list-style-type: none"> • MACsec-capable 2 x Stacking/SFP-DD ports* (unpopulated) 1 x Serial console port (RJ-45) 1 x 10/100/1000BASE-T out-of-band management port 2 x USB A ports for management or external USB flash 1 x USB Micro-B console port

Switch Model	Interfaces
5420M-48W-4YE	48 x 10/100/1000BASE-T 802.3bt (90W) ports <ul style="list-style-type: none"> • Full / Half-Duplex(autosensing) • MACsec-capable 4 x 1/10/25Gb SFP28 uplink ports (unpopulated) <ul style="list-style-type: none"> • MACsec-capable 2 x Stacking/SFP-DD ports* (unpopulated) 1 x Serial console port (RJ-45) 1 x 10/100/1000BASE-T out-of-band management port 2 x USB A ports for management or external USB flash 1 x USB Micro-B console port
5420M-16MW-32P-4YE	16 x 100M/1G/2.5GBASE-T 802.3bt (90W) ports <ul style="list-style-type: none"> • MACsec-capable 32 x 10/100/1000BASE-T 802.3at (30W) ports <ul style="list-style-type: none"> • Full / Half-Duplex(autosensing) • MACsec-capable 4 x 1/10/25Gb SFP28 uplink ports (unpopulated) <ul style="list-style-type: none"> • MACsec-capable 2 x Stacking/SFP-DD ports* (unpopulated) 1 x Serial console port (RJ-45) 1 x 10/100/1000BASE-T out-of-band management port 2 x USB A ports for management or external USB flash 1 x USB Micro-B console port

* Notes on use of the 2 x Stacking/SFP-DD ports

1. With Switch Engine, the 2 x SFP-DD ports can be used either for stacking or as Ethernet uplink ports (when not stacking).
2. With Fabric Engine, the 2 x SFP-DD ports can be used as Ethernet uplinks when in non-Fabric mode.
3. SFP-DD ports support either 10Gb or 20Gb data rates with the use of appropriate transceivers/cables.
4. When used as uplinks, 5420M models support up to 2 x 10Gb channels on each SFP-DD port
5. When used as uplinks, 5420F models support a single 10Gb channel on each SFP-DD port.

Performance and Scale

5420F Performance and Scale

Switch Model	Max Active 10/100/1000Mb Ports	Max Active 100Mb/1Gb/2.5Gb Ports	Max Active 100Mb/1Gb SFP Ports	Max Active 1Gb/10Gb SFP+ Ports	Max Active 1Gb/10Gb/25Gb SFP28 Ports	Max Active 20Gb Stacking Ports***	Aggregated Switch Bandwidth	Frame Forwarding Rate
5420F-24T-4XE	24	0	0	6*	0	2	208Gbps	154.8Mpps
5420F-24P-4XE	24	0	0	6*	0	2	208Gbps	154.8Mpps
5420F-24S-4XE	0	0	24	6*	0	2	208Gbps	154.8Mpps
5420F-48T-4XE	48	0	0	6*	0	2	256Gbps	190.5Mpps
5420F-48P-4XE	48	0	0	6*	0	2	256Gbps	190.5Mpps
5420F-48P-4XL	48	0	0	6*	0	2	256Gbps	190.5Mpps
5420F-8W-16P-4XE	24	0	0	6*	0	2	208Gbps	154.8Mpps

Switch Model	Max Active 10/100/1000Mb Ports	Max Active 100Mb/1Gb/2.5Gb Ports	Max Active 100Mb/1Gb SFP Ports	Max Active 1Gb/10Gb SFP+ Ports	Max Active 1Gb/10Gb/25Gb SFP28 Ports	Max Active 20Gb Stacking Ports***	Aggregated Switch Bandwidth	Frame Forwarding Rate
5420F-16W-32P-4XE	48	0	0	6*	0	2	256Gbps	190.5Mpps
5420F-16MW-32P-4XE	32	16	0	6*	0	2	304Gbps	226.2Mpps

5420M Performance and Scale

Switch Model	Max Active 10/100/1000Mb Ports	Max Active 100Mb/1Gb/2.5Gb Ports	Max Active 100Mb/1Gb SFP Ports	Max Active 1Gb/10Gb SFP+ Ports	Max Active 1Gb/10Gb/25Gb SFP28 Ports	Max Active 20Gb Stacking Ports***	Aggregated Switch Bandwidth	Frame Forwarding Rate
5420M-24T-4YE	24	0	0	8**	4	2	328Gbps	244.0Mpps
5420M-24W-4YE	24	0	0	8**	4	2	328Gbps	244.0Mpps
5420M-48T-4YE	48	0	0	8**	4	2	376Gbps	279.7Mpps
5420M-48W-4YE	48	0	0	8**	4	2	376Gbps	279.7Mpps
5420M-16MW-32P-4YE	32	16	0	8**	4	2	424Gbps	315.5Mpps

* Includes 2 x 1/10G ports available using the SFP-DD ports when these ports are not used for stacking with Switch Engine, or when in non-Fabric mode with Fabric Engine

** Includes 4 x 1/10Gb ports available through channelization of the 2 x SFP-DD ports when these ports are not used for stacking with Switch Engine, or when in non-Fabric mode with Fabric Engine. It also includes the 4 x SFP28 uplink ports when run at 1/10Gb

*** Switch Engine only: 20Gb stacking requires SFP-DD transceivers/cables; 10Gb stacking supported using SFP+ transceivers/cables

Software Scaling

5420F Series with Switch Engine

- MAC Table: 32,000
- IPv4 ARP Table: 16,000
- IPv4 Route Table: 12,000
- IP Multicast Entries (S,G,V): 6,000
- IPv6 Route Table: 6,000
- IPv6 Neighbor Table 6,000
- ACL (Ingress/Egress): 8,000/1,024
- QoS Egress Queues/Port: 8
- VLANs: 4,094
- IP Interfaces (aka Routed VLANs): 1,533

One Policy Scaling

- Policy Profiles: 63
- Unique Permit/deny rules per switch: 4,024

5420M Series with Switch Engine

- MAC Table: 64,000
- IPv4 ARP Table: 24,000
- IPv4 Route Table: 12,000
- IP Multicast Entries (S,G,V): 12,000
- IPv6 Route Table: 6,000
- IPv6 Neighbor Table 12,000
- ACL (Ingress/Egress): 18,000/1,024
- QoS Egress Queues/Port: 8
- VLANs: 4,094
- IP Interfaces (aka Routed VLANs): 1,533

One Policy Scaling

- Policy Profiles: 63
- Unique Permit/deny rules per switch: 8,120

5420F Series with Fabric Engine

- MAC Table: 16,000 (32,000 non-Fabric)
- IPv4 ARP Table: 8,000
- IPv4 Route Table: 11,750
- IP Multicast Entries (S,G,V): 4,000
- IPv6 Route Table: 5,750
- IPv6 Neighbor Table 8,000
- ACL (Ingress/Egress): 1,024/336
- QoS Egress Queues/Port: 8
- VLANs: 4,059
- IP Interfaces (aka Routed VLANs): 248

Fabric Connect Scaling

- Fabric Adjacencies per switch: 50
- BEB Nodes per VSN (I-SID): 500

- L2 VSNs: 512
- L3 VSNs: 64

5420M Series with Fabric Engine

- MAC Table: 32,000 (64,000 non-Fabric)
- IPv4 ARP Table: 24,000
- IPv4 Route Table: 11,750
- IP Multicast Entries (S,G,V): 4,000
- IPv6 Route Table: 5,750
- IPv6 Neighbor Table 16,000
- ACL (Ingress/Egress): 1,024/336
- QoS Egress Queues/Port: 8
- VLANs: 4,059
- IP Interfaces (aka Routed VLANs): 248

Fabric Connect Scaling

- Fabric Adjacencies per switch: 50
- BEB Nodes per VSN (I-SID): 500
- L2 VSNs: 512
- L3 VSNs: 64

Weights and Dimensions

Switch Model	Weight*	Physical Dimensions
5420F-24T-4XE	4.10 kg (9.03 lb.)	Height: 43.2 mm (1.7 in.) Width: 442.0 mm (17.4 in.) Depth: 287.02 mm (11.3 in.)
5420F-24P-4XE	4.64 kg (10.23 lb.)	
5420F-24S-4XE	4.12 kg (9.08 lb.)	
5420F-8W-16P-4XE	4.64 kg (10.23 lb.)	
5420F-48T-4XE	4.64 kg (10.23 lb.)	
5420F-48P-4XE	5.28 kg (11.64 lb.)	Height: 43.2 mm (1.7 in.) Width: 442.0 mm (17.4 in.) Depth: 330.20 mm (13.0 in.)
5420F-48P-4XL	5.28 kg (11.64 lb.)	
5420F-16W-32P-4XE	5.36 kg (11.82 lb.)	
5420F-16MW-32P-4XE	5.30 kg (11.68 lb.)	
5420M-24T-4YE	4.18 kg (9.22 lb.)	
5420M-24W-4YE	4.40 kg (9.70 lb.)	
5420M-48T-4YE	4.39 kg (9.68 lb.)	
5420M-48W-4YE	4.73 kg (10.43 lb.)	
5420M-16MW-32P-4YE	5.30 kg (11.68 lb.)	

* Measured weight includes fan (XN-FAN-000) and PSU cover(s), but does not include optional power supply unit(s).

Optional Power Supply Unit Specifications

	XN-ACPWR-150W XN-ACPWR-150W-FB	XN-ACPWR-600W XN-ACPWR-600W-FB	XN-ACPWR-920W	XN-ACPWR-1200W* XN-ACPWR-1200W-FB	XN-ACPWR-2000W** XN-ACPWR-2000-FB-A
Voltage Input Range (Nominal)	100-127/200-240 VAC	100-127/200-240 VAC	100-127/200-240 VAC	100-127/200-240 VAC	100-127/200-240 VAC
Line Frequency Range	47Hz to 63Hz	47Hz to 63Hz	47Hz to 63Hz	47Hz to 63Hz	47Hz to 63Hz
Power Supply Input Socket	IEC/EN60320 C14	IEC/EN60320 C14	IEC/EN60320 C14	IEC/EN60320 C16 IEC/EN 60320 C14 (for -FB)	IEC/EN60320 C16 IEC/EN 60320 C14 (for -FB-A)
Power Cord Input Plug	IEC/EN60320 C13	IEC/EN60320 C13	IEC/EN60320 C13	IEC/EN60320 C15 IEC/EN 60320 C13 (for -FB)	IEC/EN60320 C15 IEC/EN 60320 C13 (for -FB-A)
Operating Temperature	0°C to 50°C (32°F to 122°F) Normal Operation	0°C to 50°C (32°F to 122°F) Normal Operation	0°C to 50°C (32°F to 122°F) Normal Operation	0°C to 50°C (32°F to 122°F) Normal Operation	0°C to 45°C (32°F to 113°F)***

* 200-240VAC is required to achieve full 1200W output. If run at 100-120 VAC, output is limited to 860W

** 200-240 VAC is required to achieve full 2000W output. If run at 100-120 VAC, output is limited to 1100W

*** At sea-level, 0°C to 40°C (32°F to 104°F) at 1500 m; 0°C to 35°C (32°F to 95°F) at 3000 m

5420F Internal Fixed and Secondary Power Supply Options

Model	Internal Fixed Power Supply Unit (PSU)*	Secondary Power Supply Unit (PSU)**
5420F-24T-4XE	120W AC PSU	XN-ACPWR-150W or XN-ACPWR-150W-FB
5420F-24P-4XE	660W AC PSU	XN-ACPWR-600W or XN-ACPWR-600W-FB
5420F-24S-4XE	150W AC PSU	XN-ACPWR-150W or XN-ACPWR-150W-FB
5420F-48T-4XE	120W AC PSU	XN-ACPWR-150W or XN-ACPWR-150W-FB
5420F-48P-4XE	860W AC PSU	XN-ACPWR-920W or XN-ACPWR-1200W-FB
5420F-48P-4XL	860W AC PSU	XN-ACPWR-920W or XN-ACPWR-1200W-FB
5420F-8W-16P-4XE	660W AC PSU	XN-ACPWR-600W or XN-ACPWR-600W-FB
5420F-16W-32P-4XE	1200W AC PSU	XN-ACPWR-1200W or XN-ACPWR-1200W-FB
5420F-16MW-32P-4XE	1200W AC PSU	XN-ACPWR-1200W or XN-ACPWR-1200W-FB

* Internal Fixed PSU is non-orderable and comes pre-installed with each 5420F model

** Secondary PSU provides power redundancy in 5420F non-PoE models and enables maximum PoE Power Budget in 5420F PoE models (see table below). Model/PSU combinations other than those listed above are blocked physically or in software.

Note: Refer to the Hardware Installation Guide for minimum software versions needed on the switch for supported power supply units.

5420F PoE Power Budget

Model	PoE Budget with Single Internal Fixed PSU	PoE Budget with Recommended Secondary PSU
5420F-24P-4XE	380W	720W
5420F-48P-4XE	740W	1440W
5420F-48P-4XL	740W	1440W
5420F-8W-16P-4XE	480W	960W
5420F-16W-32P-4XE	872W*/960W**	1437W*/1874W**
5420F-16MW-32P-4XE	860W*/960W**	1425W*/1862W**

* @ 100-120 VAC

** @ 200-240 VAC

5420M Primary and Secondary Power Supply Options

Model	Primary Power Supply Unit (PSU)*	Secondary Power Supply Unit (PSU)*
5420M-24T-4YE	XN-ACPWR-150W or XN-ACPWR-150W-FB	XN-ACPWR-150W or XN-ACPWR-150W-FB
5420M-24W-4YE	XN-ACPWR-920W or XN-ACPWR-1200W-FB	XN-ACPWR-920W or XN-ACPWR-1200W-FB
5420M-48T-4YE	XN-ACPWR-150W or XN-ACPWR-150W-FB	XN-ACPWR-150W or XN-ACPWR-150W-FB
5420M-48W-4YE	XN-ACPWR-920W, XN-ACPWR-2000W, or XN-ACPWR-1200W-FB	XN-ACPWR-920W, XN-ACPWR-2000W, or XN-ACPWR-1200W-FB, XN-ACPWR-2000W-FB-A
5420M-16MW-32P-4YE	XN-ACPWR-920W, XN-ACPWR-2000W, or XN-ACPWR-1200W-FB	XN-ACPWR-920W, XN-ACPWR-2000W, or XN-ACPWR-1200W-FB, XN-ACPWR-2000W-FB-A

* Primary PSU is required; Secondary PSU provides power redundancy and enables maximum PoE Budget in 5420M PoE models (see table below). Model/PSU combinations other than those listed above are blocked physically or in software.

Note: Refer to the Hardware Installation Guide for minimum software versions needed on the switch for supported power supply units.

5420M PoE Power Budget

Model	Power Supply	PoE Budget with Single Primary PSU	PoE Budget with Optional Secondary PSU
5420M-24W-4YE	XN-ACPWR-920W XN-ACPWR-1200W-FB	720W	1440W
5420M-48W-4YE	XN-ACPWR-920W XN-ACPWR-1200W-FB	804W	1558W
	XN-ACPWR-2000W XN-ACPWR-2000W-FB-A	884W*/1440W**	1704W*/2880W**
5420M-16MW-32P-4YE	XN-ACPWR-920W XN-ACPWR-1200W-FB	787W	1541W
	XN-ACPWR-2000W XN-ACPWR-2000W-FB-A	884W*/1440W**	1687W*/2400W**

* @ 100-120 VAC

** @ 200-240 VAC

Minimum/Maximum Power Consumption and Heat Dissipation

5420F Switches

Switch Model	Minimum Power Consumption (W)	Minimum Heat Dissipation (BTU/hr)	Maximum Power Consumption (W)*	Maximum Heat Dissipation (BTU/hr)**
5420F-24T-4XE	24	81	62	211
5420F-24P-4XE	37	127	833	387
5420F-24S-4XE	35	119	114	388
5420F-48T-4XE	31	106	75	255
5420F-48P-4XE	48	164	1674	663
5420F-48P-4XL	49	168	1657	604
5420F-8W-16P-4XE	37	127	1092	452
5420F-16W-32P-4XE	46	156	2150	785
5420F-16MW-32P-4XE	50	172	2152	790

* Includes maximum PoE load (W) through the switch

**Does not include PoE load heat dissipated through external electronic load

5420M Switches

Switch Model	Minimum Power Consumption (W)	Minimum Heat Dissipation (BTU/hr)	Maximum Power Consumption (W)*	Maximum Heat Dissipation (BTU/hr)**
5420M-24T-4YE	28	95	57	194
5420M-24W-4YE	43	148	1601	551
5420M-48T-4YE	34	117	68	232
5420M-48W-4YE	72	245	3090	716
5420M-16MW-32P-4YE	69	234	2564	560

* Includes maximum PoE load (W) through the switch

**Does not include PoE load heat dissipated through external electronic load

Acoustic Noise

Switch Model	Bystander Sound Pressure – dB(A)*		Declared Sound Power – Bels*	
	1 PSU	2 PSUs	1 PSU	2 PSUs
5420F-24T-4XE	35.50	36.20	4.83	4.93
5420F-24P-4XE	39.60	39.90	5.16	5.24
5420F-24S-4XE	39.70	39.60	5.21	5.22
5420F-48T-4XE	35.30	34.90	4.78	4.77
5420F-48P-4XE	41.30	42.00	5.42	5.48
5420F-48P-4XL	44.00	42.60	5.67	5.57
5420F-8W-16P-4XE	42.30	43.20	5.52	5.63
5420F-16W-32P-4XE	44.30	54.10	5.72	6.62
5420F-16MW-32P-4XE	45.30	54.40	5.77	6.64
5420M-24T-4YE	33.50	33.00	4.59	4.65
5420M-24W-4YE	33.00	42.80	5.02	5.51
5420M-48T-4YE	33.40	33.00	4.56	4.59
5420M-48W-4YE**	52.70	59.80	6.42	6.97
5420M-16MW-32P-4YE**	51.70	50.50	6.30	6.25

* Noise measurements are based on operational tests conducted at 25°C (77°F) in compliance with ISO 7779

** 5420M-48W-4YE and 5420M-16MW-32P-4YE results using 2000 W PSUs (XN-ACPWR-2000W)

Environmental

Environmental Specifications

EN/ETSI 300 019-2-1 v2.1.2 - Class 1.2 Storage
EN/ETSI 300 019-2-2 v2.1.2 - Class 2.3 Transportation
EN/ETSI 300 019-2-3 v2.1.2 - Class 3.1e Operational
EN/ETSI 300 753 (1997-10) - Acoustic Noise
ASTM D3580 Random Vibration Unpackaged 1.5 G

Environmental Compliance

EU RoHS - 2011/65/EU
EU WEEE - 2012/19/EU
EU REACH – Regulation (EC) No 1907/2006 Reporting
China RoHS - SJ/T 11363-2006
Taiwan RoHS - CNS 15663(2013.7)

Environmental Operating Conditions

Temp: 0°C to 50°C (32°F to 122°F)
Humidity: 5% to 95% relative humidity, non-condensing
Altitude: 0 to 3,000 meters (9,850 feet)
Shock (half sine) 30m/s² (3G), 11ms, 60 shocks
Random vibration: 3 to 500 Hz at 1.5 G rms

Packaging and Storage Specifications

Temp: -40°C to 70°C (-40°F to 158°F)
Humidity: 5% to 95% relative humidity, non-condensing
Packaged Shock (half sine): 180 m/s² (18 G), 6 ms, 600 shocks
Packaged Vibration: 5 to 62 Hz at velocity 5 mm/s, 62 to 500 Hz at 0.2 G
Packaged Random Vibration: 5 to 20 Hz at 1.0 ASD w/-3 dB/oct. from 20 to 200 Hz
Packaged Drop Height: 14 drops minimum on sides and corners at 42 inches (<15 kg box)

Regulatory and Safety

North American ITE

UL 60950-1
UL/CuL 62368-1 Listed
CSA 22.2 No. 60950-1 2nd edition 2014 (Canada)
Complies with FCC 21CFR 1040.10 (U.S. Laser Safety)
CDRH Letter of Approval (US FDA Approval)

European ITE

EN 60950-1 2nd Edition
EN 62368-1
EN 60825-1 Class 1 (Lasers Safety)
2014/35/ EU Low Voltage Directive

International ITE

CB Report & Certificate per IEC 60950-1
CB Report & Certificate IEC 62368-1
AS/NZS 60950-1 (Australia /New Zealand)

EMI/EMC Standards

North American EMC for ITE
FCC CFR 47 Part 15 Class A (USA)
ICES-003 Class A (Canada)

European EMC Standards

EN 55032 Class A
EN 55024
EN 61000-3-2,2014 (Harmonics)
EN 61000-3-3 2013 (Flicker)
EN 300 386 (EMC Telecommunications)
2014/30/EU EMC Directive

International EMC Certifications

CISPR 32, Class A (International Emissions)
AS/NZS CISPR32
CISPR 24 Class A (International Immunity)
IEC 61000-4-2 / EN 61000-4-2 Electrostatic Discharge, 8kV Contact, 15 kV Air, Criteria B
IEC 61000-4-3 / EN 61000-4-3 Radiated Immunity 10V/m, Criteria A
IEC 61000-4-4 / EN 61000-4-4 Transient Burst, 2 kV, Criteria B
IEC 61000-4-5 / EN 61000-4-5 Surge, 2 kV L-L, 2 kV L-G, Level 3, Criteria B
IEC 61000-4-6 Conducted Immunity, 0.15-80 MHz, 10V/rms, 80%AM (1kHz), Criteria A
IEC/EN 61000-4-11 Power Dips & Interruptions, >30%, 25 periods, Criteria C

Country Specific

VCCI Class A (Japan Emissions)
ACMA RCM (Australia Emissions)
CCC Mark (China)
KCC Mark, EMC Approval (Korea)
BSMI (Taiwan)
Anatel (Brazil)
NoM (Mexico)
EAC (Russia, Belarus, Kazakhstan)
NRCS (South Africa)

IEEE 802.3 Media Access Standards

IEEE 802.3ab 1000BASE-T
IEEE 802.3bz 2.5G/5GBASE-T
IEEE 802.3bt Type4 PoE
IEEE 802.3ae 10GBASE-X
IEEE 802.3aq 10GBASE-LRM
IEEE 802.3by 25GBASE-X
IEEE 802.3az Energy Efficient Ethernet

Ordering Notes

Customers ordering a 5420F Series switch receive the hardware switch along with Base software license, integrated power supply, fan modules and rack-mount kit. 5420M Series switch customers receive the same components, except for power supplies which are not included with the unit.

At least one Power Supply Unit (PSU) is required for 5420M operation. Additional power supplies (either for 5420F or 5420M switches), transceiver/optics, power cords, as well as Premier and/or MACsec licenses must be ordered separately.

Base Software and Optional Premier License

The Base software included with each 5420 unit supports most available software features. Certain features, however, require a Premier License to operate.

For Switch Engine, a Premier License is required for:

- 5 or more OSPF interfaces
- PIMDM/PIM SSM
- Anycast RP (Rendezvous Point)
- MultiSource Discovery Protocol (MSDP)
- IS-IS/BGP4/MBGP*
- GRE Tunneling
- Ethernet VPN (EVPN)

For Fabric Engine, a Premier License is required for:

- 5 or more OSPF active interfaces
- 3 or more BGP Peers
- Layer 3 Virtual Service Networks (L3 VSNs)

Ordering Information

Part Number	Product Name	Description
5420F-24T-4XE	5420F 24-port Switch	5420 Universal Switch with 24 x 10/100/1000BASE-T Full / Half-Duplex ports, includes 4 x 1/10Gb SFP+ uplink ports, 2 x Stacking/SFP-DD ports, 1 internal fixed PSU, one unpopulated PSU slot, fixed fan module, Base software license.
5420F-24P-4XE	5420F 24-port 30W PoE Switch	5420 Universal Switch with 24 x 10/100/1000BASE-T Full / Half-Duplex 802.3at 30W PoE ports, includes 4 x 1/10Gb SFP+ uplink ports, 2 x Stacking/SFP-DD ports, 1 internal fixed PSU, one unpopulated PSU slot, fixed fan module, Base software license.
5420F-24S-4XE	5420F 24-port SFP Switch	5420 Universal Switch with 24 x 100M/1Gb SFP ports, includes 4 x 1/10Gb SFP+ uplink ports, 2 x Stacking/SFP-DD ports, 1 internal fixed PSU, one unpopulated PSU slot, fixed fan module, Base software license.
5420F-48T-4XE	5420F 48-port Switch	5420 Universal Switch with 48 x 10/100/1000BASE-T Full / Half-Duplex ports, includes 4 x 1/10Gb SFP+ uplink ports, 2 x Stacking/SFP-DD ports, 1 internal fixed PSU, one unpopulated PSU slot, fixed fan module, Base software license.
5420F-48P-4XE	5420F 48-port 30W PoE Switch	5420 Universal Switch with 48 x 10/100/1000BASE-T Full / Half-Duplex 802.3at 30W PoE ports, includes 4 x 1/10Gb SFP+ uplink ports, 2 x Stacking/SFP-DD ports, 1 internal fixed PSU, one unpopulated PSU slot, fixed fan module, Base software license.

Part Number	Product Name	Description
5420F-48P-4XL	5420F 48-port 30W PoE Switch with LRM	5420 Universal Switch with 48 x 10/100/1000BASE-T Full / Half-Duplex 802.3at 30W PoE ports, includes 4 x 1/10Gb SFP+ LRM and uplink ports, 2 x Stacking/SFP-DD ports, 1 internal fixed PSU, one unpopulated PSU slot, fixed fan module, Base software license.
5420F-8W-16P-4XE	5420F 24-port Switch with 8 ports 90W and 16 ports 30W PoE	5420 Universal Switch with 8 x 10/100/1000BASE-T Full / Half-Duplex 802.3bt 90W PoE ports and 16 x10/100/1000BASE-T Full / Half-Duplex 802.3at 30W PoE ports, includes 4 x 1/10Gb SFP+ uplink ports, 2 x Stacking/SFP-DD ports, 1 internal fixed PSU, one unpopulated PSU slot, fixed fan module, Base software license.
5420F-16W-32P-4XE	5420F 48-port Switch with 16 ports 90W and 32 ports 30W PoE	5420 Universal Switch with 16 x 10/100/1000BASE-T Full / Half-Duplex 802.3bt 90W PoE ports and 32 x10/100/1000BASE-T Full / Half-Duplex 802.3at 30W PoE ports, includes 4 x 1/10Gb SFP+ uplink ports, 2 x Stacking/SFP-DD ports, 1 internal fixed PSU, one unpopulated PSU slot, fixed fan module, Base software license.
5420F-16MW-32P-4XE	5420F 48-port Switch with 16 ports 90W multi-rate and 32 ports 30W PoE	5420 Universal Switch with 16 x 100Mb/1Gb/2.5Gb 802.3bt 90W PoE ports plus 32 x 10/100/1000BASE-T Full / Half-Duplex 30W PoE ports, includes 4x 1/10Gb SFP+ uplink ports, 2 x Stacking/SFP-DD ports, 1 internal fixed PSU, one unpopulated PSU slot, fixed fan module, Base software license.
5420M-24T-4YE	5420M 24-port Switch	5420 Universal Switch with 24 x 10/100/1000BASE-T Full / Half-Duplex ports, includes 4 x 1/10/25Gb SFP28 uplink ports, 2 x Stacking/SFP-DD ports, two unpopulated PSU slots, modular fan module, Base software license.
5420M-24W-4YE	5420M 24-port 90W PoE Switch	5420 Universal Switch with 24 x 10/100/1000BASE-T 802.3bt 90W PoE Full / Half-Duplex ports, includes 4 x 1/10/25GbSFP28 uplink ports, 2 x Stacking/SFP-DD ports, two unpopulated PSU slots, modular fan module, Base software license.
5420M-48T-4YE	5420M 48-port Switch	5420 Universal Switch with 48 x 10/100/1000BASE-T Full / Half-Duplex ports, includes 4 x 1/10/25Gb SFP28 uplink ports, 2 x Stacking/SFP-DD ports, two unpopulated PSU slots, modular fan module, Base software license.
5420M-48W-4YE	5420M 48-port 90W PoE Switch	5420 Universal Switch with 48 x 10/100/1000BASE-T 802.3bt 90W PoE Full / Half-Duplex ports, includes 4 x 1/10/25GbSFP28 uplink ports, 2 x Stacking/SFP-DD ports, two unpopulated PSU slots, modular fan module, Base software license.
5420M-16MW-32P-4YE	5420M 48-port Switch with 16 ports 90W multi-rate and 32 ports PoE	5420 Universal Switch with 16 x 100Mb/1Gb/2.5Gb 802.3bt 90W PoE ports plus 32 x 10/100/1000BASE-T Full / Half-Duplex 30W PoE ports, includes 4 x 1/10/25Gb SFP28 uplink ports, 2 x Stacking/SFP-DD ports, two unpopulated PSU slots,modular fan module, Base software license.

Accessories

Part Number	Product Name	Description
XN-ACPWR-150W	150W AC PSU FB	150W AC PSU, Front to Back Airflow
XN-ACPWR-150W-FB	150W AC PSU FB	150W AC PSU, Front to Back Airflow
XN-ACPWR-600W	600W AC PSU FB	600W AC PSU, Front to Back Airflow
XN-ACPWR-600W-FB	600W AC PSU FB	600W AC PSU, Front to Back Airflow
XN-ACPWR-920W	920W AC PSU FB	920W AC PSU, Front to Back Airflow
XN-ACPWR-1200W	1200W AC PSU FB	1200W AC PSU, Front to Back Airflow
XN-ACPWR-1200W-FB	1200W AC PSU FB	1200W AC PSU, Front to Back Airflow
XN-ACPWR-2000W	2000W AC PSU FB	2000W AC PSU, Front to Back Airflow

Part Number	Product Name	Description
XN-ACPWR-2000W-FB-A	2000W AC PSU FB	2000W AC PSU, Front to Back Airflow
XN-FAN-000	Spare Fan Module FB	Spare Fan Module for 5420 Series, Front to Back Airflow

Software Licenses

Part Number	Product Name	Description
5000-PRMR-LIC-P	Premier License for 5000 Series	Perpetual Premier License for 5000 Series switches
5000-MACSEC-LIC-P	MACsec License for 5000 Series	Perpetual MACsec license for 5000 Series switches

Warranty

All 5420 Series models are covered under Extreme's Universal LLW policy. For warranty details, visit our [Policies and Warranties](#) page.

Optics/Transceivers

For a list of the optics and transceivers supported on the 5420 Series hardware, refer to our [Extreme Optics Compatibility Tool](#).

Power Cords

Power cords are not included with the 5420 in support of our green initiatives but can be ordered separately.

Maintenance Services

Extreme's maintenance and support services are provided 100% by in-house engineering experts. We have a rate of over 90% first-person resolution, ensuring efficient operation of your business-essential network.

With 24x7x365 phone support, advanced parts replacement, and on-site support, we augment your staff with expert resources to help you mitigate critical network issues fast. Visit our [ExtremeWorks Maintenance Services](#) for more information.

Certifications

For information on Industry, Security, and Government certifications for 5420 Series models, contact your Sales Representative.



©2024 Extreme Networks, Inc. All rights reserved. Extreme Networks and the Extreme Networks logo are trademarks or registered trademarks of Extreme Networks, Inc. in the United States and/or other countries. All other names are the property of their respective owners. For additional information on Extreme Networks Trademarks, see <https://www.extremenetworks.com/about-extreme-networks/company/legal/trademarks>. Specifications and product availability are subject to change without notice. 5aug24