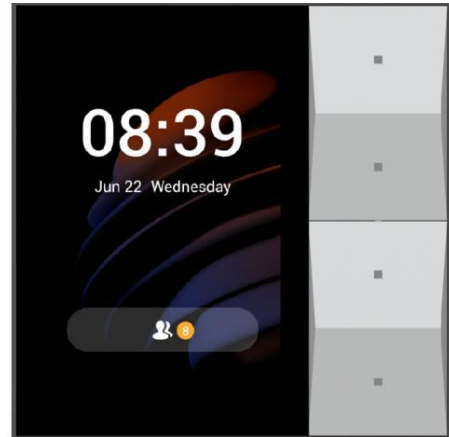


New hassle-free smart control center for your home

The akubela HyPanel Lite, a smart home center panel with a Linux operating system. The ALL IN ONE design integrates smart intercom, ZigBee gateway and home automation, and is compatible with plentiful ecosystem. Multi-modal interaction can be easily used by the whole family, offering the excellent smart home experience.

At a Glance

- 3.27" touch screen with energy saving mode
- 4 metal buttons, suitable for the whole family
- 2-gang switch, replace conventional switch
- Smart intercom, ZigBee gateway, home automation ALL IN ONE
- Kinds of sensors built-in
- EU standard flush mounted box



Basic Information

- Model Number: KS41-R2-EU
- Power Supply: 180 ~ 260VAC, 50Hz
- Built-in Relay Capacity: 16A
- Output: 2 gang, 1200W total;
 - 800W/gang for resistive;
 - 400W/gang for LED/CFL;
 - Wire Range: 0.5 ~ 2.5mm² (24 ~ 12AWG)
- Power Meter: Supported
- Operation System: Linux
- DDR/Flash: 128MB/256MB
- Wi-Fi: IEEE802.11 b/g/n, @2.4GHz
- Bluetooth: Bluetooth 4.2
- Ethernet Port: 1×RJ45, 10/100Mbps adaptive

- ZigBee: ZigBee 3.0
- ZigBee Sub-Device Limit: 32
- Microphone: Dual microphones, -26dBFS
- Speaker: Single speaker, 8Ω/1.5W

Appearance

- Material: Metal buttons, V0 fireproof PC
- Screen: 3.27" touch screen
- Screen Resolution: 320×480 pixels
- Screen Brightness: 220 cd/m²

Sensors Built In

- Proximity Sensor: 30 ~ 60cm
- Light Sensor: Low-level lux detection
- Temperature Sensor: ±1°C, range: -10°C ~ 55°C
- Humidity Sensor: ±5%, range: 10% ~ 90%RH, without condensation

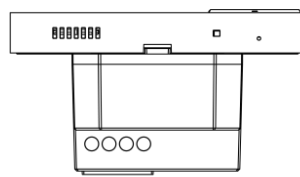
Working Environment

- Environment: For indoor use only
- Working Humidity: 10% ~ 90%RH, without condensation
- Working Temperature: -10°C ~ 55°C
- Storage Temperature: -20°C ~ 65°C
- IP Rating: IP20

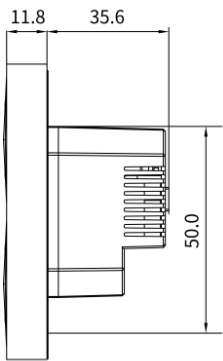
Installation

- Installation: Wall flush mounting
- Flush Mounted Module: EU/UK standard
- Wiring Way: L- + N- wire required

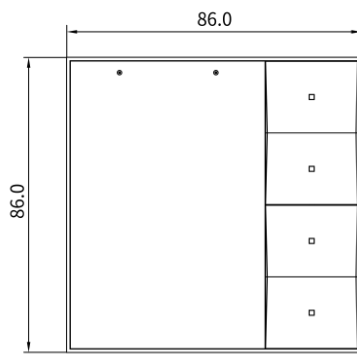
Product Dimension Diagram (mm)



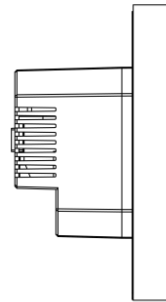
⑤ BOTTOM VIEW



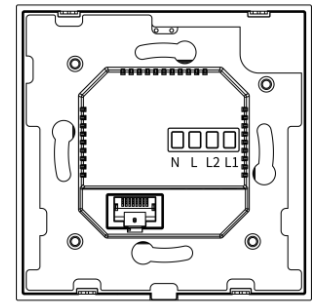
② RIGHT VIEW



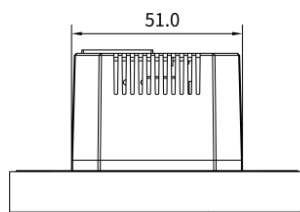
① FRONT VIEW



③ LEFT VIEW



④ BACK VIEW



⑥ TOP VIEW